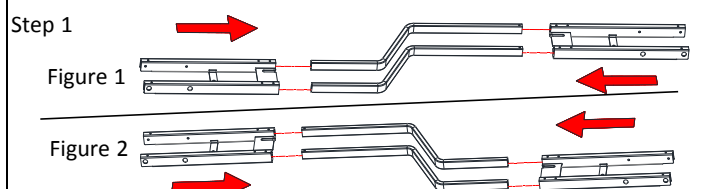
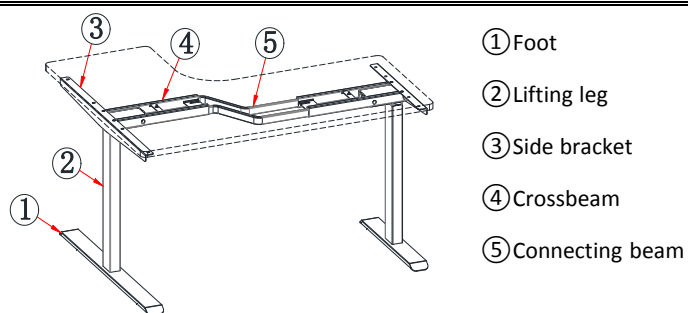
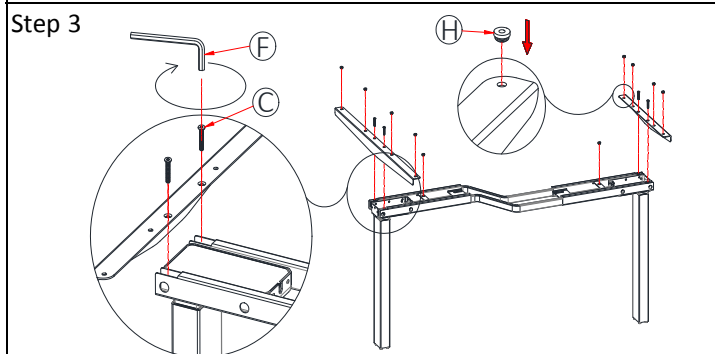
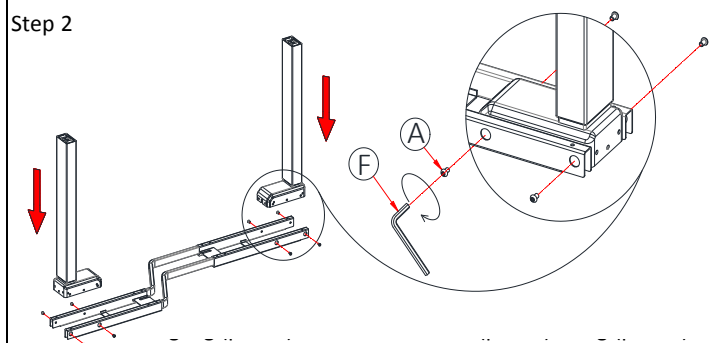


L Shape Standing Desk Installation Manual

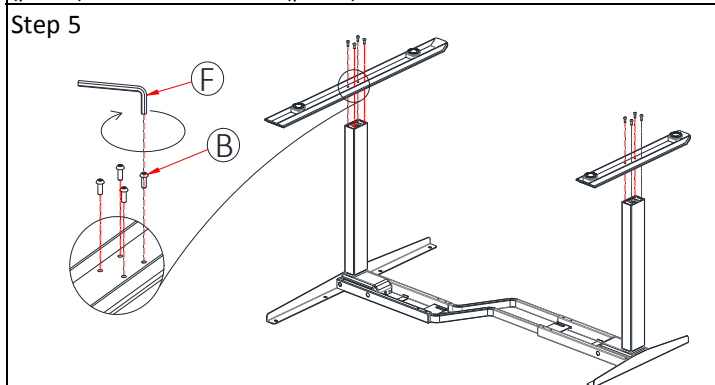
UP1B-L



The two ends of the Connecting beams (part 5) are inserted into two Crossbeams (part 4). Note: According to the direction of the L shape of the desktop, determine the installation of the Crossbeam (Part 4). (As shown in Figure 1 or Figure 2).

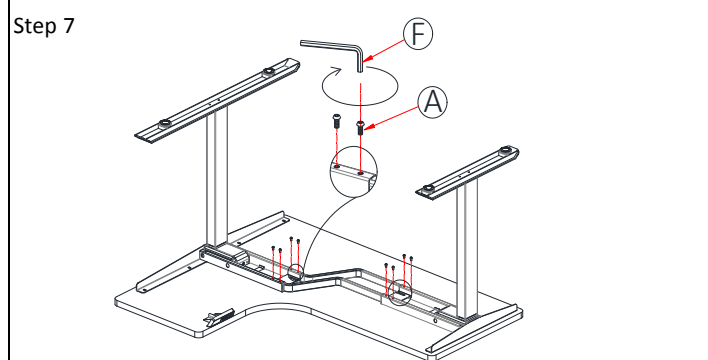
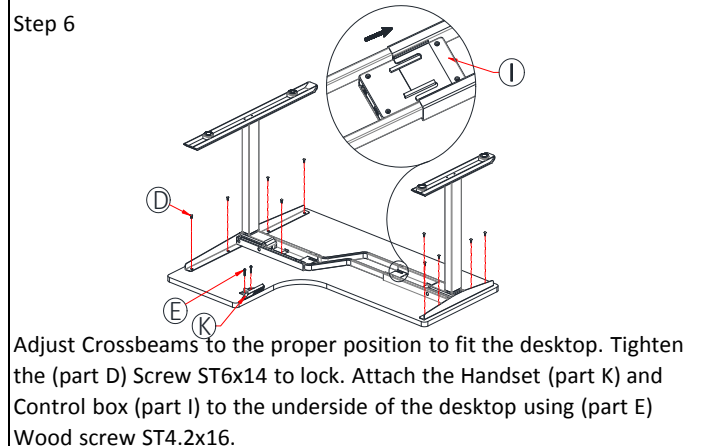


Attach the Side bracket (part 3) to the Crossbeam (part 4) using (part C) Screw M6x45. Rubber gasket (part H) into the hole on the Side bracket (part 3) and the Crossbeam (part 4).

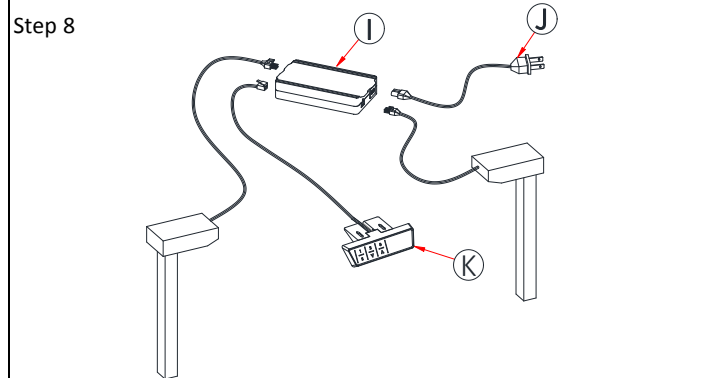


Attach Foot (part 1) to the Lifting leg (part 2) using (part B) Screw M6x16.

Parts Included			Qty
A	Screw M6x10		16
B	Screw M6x16		8
C	Screw M6x45		4
D	Screw M6x14		10
E	Wood screw ST4.2x16		2
F	Allen wrench 4mm		1
G	Cable clip		5
H	Rubber gasket		10
I	Control box		1
J	Power cable		1
K	Handset		1

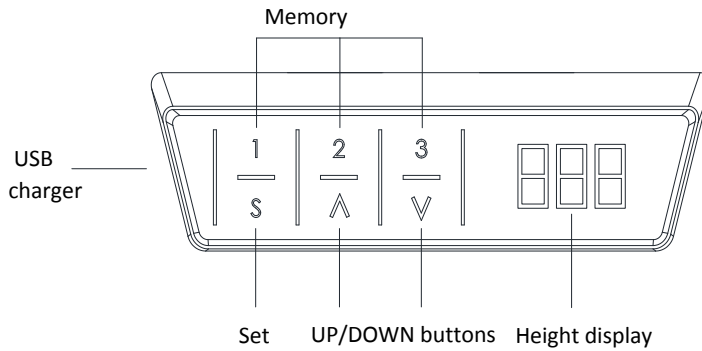


Tighten Crossbeams (part 4) using (part A) Screw M6*10.



Connect the Lifting legs (part 2), Handset (part K), and the Power cable (part J) to the Control box (part I).

Instructions For Use



IMPORTANT: You must reset the lifting column prior to use.

Reset Procedure:

1. Press and hold the DOWN button on the handset until the column reaches its lowest height.
2. Release the DOWN button.
3. Press and hold the DOWN button about 5 seconds until LED sounds "di". The desk will be ready to use.

Adjust desk height:

Press UP or DOWN button to adjust the lifting leg.

Memory setting:

1. Press the UP or DOWN button to move the column to the desired height.
2. Press the "S" button until the LED flashes.
3. Press the number "1, 2, or 3" you want the column set to.

LOCKING OR UNLOCKING THE HANDSET.

To Lock:

1. Press and hold the "S" and "UP" buttons for about 5 seconds until LED shows LOC.
2. Release the button.
3. Handset is now locked.

To Unlock: (Removing LOC on the handset)

1. Press and hold the "S" and "DOWN" buttons for about 5 seconds until LED shows the height display.
2. Release the button.
3. Handset is now unlocked.

Reminder function (h means Hour)

1. Press the "1" and "3" buttons until LED shows the "x.xh".
2. Press the UP or DOWN buttons to adjust the reminder time "0.5h", "1.0h, "1.5h"...
3. Release the button. 2 minutes later Reminder function is now set. Removing the reminder function, adjust the time to "0.0h".

CHANGING FROM INCHES TO CENTIMETERS: (0 is centimeters. 1 is inches)

1. Press and hold the S button for 5 seconds until the LED display reads "S-1" and starts flashing.
2. Press the S button again, then press UP or DOWN until "1" is displayed on the handset.
3. Press UP or DOWN buttons switches to "0", "1".
4. Press S button the desk is now ready to use.

SETTING THE UPPER AND LOWER LIMITS:

The column can adjust the upper and lower travel limit.

Set the UPPER or LOWER Limit:

1. Use the UP/DOWN buttons to move the column to the desired height.
2. Press the "UP" and "DOWN" button about 5 second until sounds "di".
3. The new upper or lower limit is now set.

Removing the Upper or Lower Position:

1. Press the "UP" and "DOWN" button together about 5 second until sounds "di".
2. The upper or lower limits are now removed.

NOTE II: Reset the Memory positions if they are outside the new range.

NOTE III: If you attempt to revise a previously set upper or lower limit.

TROUBLESHOOTING:

The first step to reconnecting all wires and power code is to make sure the wires are solidly connected. Then RESET THE DESK:

Error code	Error cause	Measure
E04	Handset not connected	Check handset cable connection to the controller and execute RESET .
E05	Anti-collision	Fixed controller and handset.
HOT	Overheat	Allow the desk to cool down for 5-18 minutes.
E11	Lifting leg 1 not connected	Check lifting leg cable connection to the controller and execute RESET .
E21	Lifting leg 2 not connected	Check handset cable connection to the controller and execute RESET .

If the error cannot be corrected through the described measure:

Unplug the power plug.

Wait approx. 5 minutes

Execute **RESET**.

If an error still occurs after these steps have been executed. Please contact your sales rep.